



# 2015 Updating and Screening Assessment for

## Stratford on Avon District Council

In fulfillment of Part IV of the  
Environment Act 1995  
Local Air Quality Management

August 2015

<b>Local Authority Officer</b>	Geoff Turton
<b>Department</b>	Environmental Health
<b>Address</b>	Elizabeth House Church Street Stratford upon Avon Warwickshire CV37 6HX
<b>Telephone</b>	01789 267575
<b>e-mail</b>	Geoff.turton@stratford-dc.gov.uk
<b>Report Reference number</b>	USA2015
<b>Date</b>	August 2015

## Executive Summary

This report presents the findings of Stratford-on-Avon District Council's 2015 Updated Screening Assessment (USA). The USA evaluates new sources since the 2014 Progress Report to identify those that may give rise to a risk of an exceedance of an air quality objective. Results from monitoring within the District during 2014 are also presented and evaluated in relation to the objectives. Where a risk of an exceedance is identified at a relevant location, the Council will proceed to a Detailed Assessment.

Previous Review and Assessments have concluded that concentrations of carbon monoxide, benzene, 1,3-butadiene, lead, sulphur dioxide and PM<sub>10</sub> are compliant with the relevant objectives. Air Quality Management Areas (AQMA) have however been declared for exceedances of the annual mean nitrogen dioxide objective.

Long-term monitoring data shows that there have been significant improvements in air quality across the District over the last five years. Monitoring data for 2011, 2012, 2013 and 2014 indicate that there are no longer any measured exceedances within the Stratford-upon-Avon AQMA; only one monitoring site, within the Studley AQMA, exceeded the annual mean objective in 2013/4, due to traffic queuing at a pedestrian crossing.

The Updated Screening Assessment has not identified any significant increases in measured concentrations, or any significant new emissions sources within the Stratford-on-Avon District Council area. It will therefore not be necessary to proceed to a Detailed Assessment.

# Table of contents

<b>1</b>	<b>Introduction .....</b>	<b>6</b>
1.1	Description of Local Authority Area.....	6
1.2	Purpose of Report .....	6
1.3	Air Quality Objectives .....	7
1.4	Summary of Previous Review and Assessments .....	8
<b>2</b>	<b>New Monitoring Data.....</b>	<b>11</b>
2.1	Summary of Monitoring Undertaken .....	11
2.1.1	Automatic Monitoring Sites .....	11
2.1.2	Non-Automatic Monitoring Sites.....	12
2.2	Comparison of Monitoring Results with Air Quality Objectives .....	17
2.2.1	Nitrogen Dioxide.....	17
2.2.2	PM <sub>10</sub> .....	<b>Error! Bookmark not defined.</b>
2.2.3	Sulphur Dioxide .....	<b>Error! Bookmark not defined.</b>
2.2.4	Benzene .....	<b>Error! Bookmark not defined.</b>
2.2.5	Other pollutants monitored .....	<b>Error! Bookmark not defined.</b>
2.2.6	Summary of Compliance with AQS Objectives .....	24
<b>3</b>	<b>Road Traffic Sources .....</b>	<b>25</b>
3.1	Narrow Congested Streets with Residential Properties Close to the Kerb .....	25
3.2	Busy Streets Where People May Spend 1-hour or More Close to Traffic.....	25
3.3	Roads with a High Flow of Buses and/or HGVs. ....	25
3.4	Junctions .....	25
3.5	New Roads Constructed or Proposed Since the Last Round of Review and Assessment .....	26
3.6	Roads with Significantly Changed Traffic Flows .....	26
3.7	Bus and Coach Stations .....	26
<b>4</b>	<b>Other Transport Sources .....</b>	<b>27</b>
4.1	Airports .....	27
4.2	Railways (Diesel and Steam Trains) .....	27
4.2.1	Stationary Trains .....	27
4.2.2	Moving Trains.....	27
4.3	Ports (Shipping) .....	27
<b>5</b>	<b>Industrial Sources .....</b>	<b>28</b>
5.1	Industrial Installations.....	28
5.1.1	New or Proposed Installations for which an Air Quality Assessment has been Carried Out .....	28

5.1.2	Existing Installations where Emissions have Increased Substantially or New Relevant Exposure has been Introduced .....	28
5.1.3	New or Significantly Changed Installations with No Previous Air Quality Assessment.....	28
5.2	Major Fuel (Petrol) Storage Depots .....	29
5.3	Petrol Stations.....	29
5.4	Poultry Farms.....	29
<b>6</b>	<b>Commercial and Domestic Sources.....</b>	<b>30</b>
6.1	Biomass Combustion – Individual Installations .....	30
6.2	Biomass Combustion – Combined Impacts .....	30
6.3	Domestic Solid-Fuel Burning.....	30
<b>7</b>	<b>Fugitive or Uncontrolled Sources.....</b>	<b>31</b>
<b>8</b>	<b>Conclusions and Proposed Actions .....</b>	<b>32</b>
8.1	Conclusions from New Monitoring Data .....	32
8.2	Conclusions from Assessment of Sources .....	<b>Error! Bookmark not defined.</b>
8.3	Proposed Actions .....	32
<b>9</b>	<b>References .....</b>	<b>33</b>

# **1 Introduction**

## **1.1 Description of Local Authority Area**

Stratford-on-Avon is a mostly rural district and covers most of the southern half of Warwickshire. As well as Stratford-upon-Avon, the district also includes the towns of Alcester, Southam, and Shipston-on-Stour, and the large villages of Studley and Wellesbourne.

## **1.2 Purpose of Report**

This report fulfils the requirements of the Local Air Quality Management process as set out in Part IV of the Environment Act (1995), the Air Quality Strategy for England, Scotland, Wales and Northern Ireland 2007 and the relevant Policy and Technical Guidance documents. The LAQM process places an obligation on all local authorities to regularly review and assess air quality in their areas, and to determine whether or not the air quality objectives are likely to be achieved. Where exceedences are considered likely, the local authority must then declare an Air Quality Management Area (AQMA) and prepare an Air Quality Action Plan (AQAP) setting out the measures it intends to put in place in pursuit of the objectives.

The objective of this Updating and Screening Assessment is to identify any matters that have changed which may lead to risk of an air quality objective being exceeded. A checklist approach and screening tools are used to identify significant new sources or changes and whether there is a need for a Detailed Assessment. The USA report should provide an update of any outstanding information requested previously in Review and Assessment reports.

### 1.3 Air Quality Objectives

The air quality objectives applicable to LAQM **in England** are set out in the Air Quality (England) Regulations 2000 (SI 928), The Air Quality (England) (Amendment) Regulations 2002 (SI 3043), and are shown in Table 1.1. This table shows the objectives in units of microgrammes per cubic metre  $\mu\text{g}/\text{m}^3$  (milligrammes per cubic metre,  $\text{mg}/\text{m}^3$  for carbon monoxide) with the number of exceedences in each year that are permitted (where applicable).

**Table 1.1 Air Quality Objectives included in Regulations for the purpose of LAQM in England**

Pollutant	Air Quality Objective		Date to be achieved by
	Concentration	Measured as	
Benzene	16.25 $\mu\text{g}/\text{m}^3$	Running annual mean	31.12.2003
	5.00 $\mu\text{g}/\text{m}^3$	Running annual mean	31.12.2010
1,3-Butadiene	2.25 $\mu\text{g}/\text{m}^3$	Running annual mean	31.12.2003
Carbon monoxide	10.0 $\text{mg}/\text{m}^3$	Running 8-hour mean	31.12.2003
Lead	0.5 $\mu\text{g}/\text{m}^3$	Annual mean	31.12.2004
	0.25 $\mu\text{g}/\text{m}^3$	Annual mean	31.12.2008
Nitrogen dioxide	200 $\mu\text{g}/\text{m}^3$ not to be exceeded more than 18 times a year	1-hour mean	31.12.2005
	40 $\mu\text{g}/\text{m}^3$	Annual mean	31.12.2005
Particles (PM <sub>10</sub> ) (gravimetric)	50 $\mu\text{g}/\text{m}^3$ , not to be exceeded more than 35 times a year	24-hour mean	31.12.2004
	40 $\mu\text{g}/\text{m}^3$	Annual mean	31.12.2004
Sulphur dioxide	350 $\mu\text{g}/\text{m}^3$ , not to be exceeded more than 24 times a year	1-hour mean	31.12.2004
	125 $\mu\text{g}/\text{m}^3$ , not to be exceeded more	24-hour mean	31.12.2004

	than 3 times a year		
	266 µg/m <sup>3</sup> , not to be exceeded more than 35 times a year	15-minute mean	31.12.2005

## 1.4 Summary of Previous Review and Assessments

During the first Round of Review and Assessment, Stratford-on-Avon District Council concluded that air quality across the District was good, and that there was no requirement to declare an Air Quality Management Area for any pollutant.

The 2003 Updating and Screening Assessment, prepared at the start of the second round of Review and Assessment identified one location, in Alcester Road, Studley, where the nitrogen dioxide objective may not be met. A Detailed Assessment was subsequently carried out in 2004, however, this concluded that the nitrogen dioxide objectives would not be exceeded in 2005 at any location within central Studley. An Air Quality Management Area was not therefore declared. Further monitoring in the area however confirmed that there were in fact exceedances of the annual mean objective during 2005, and an AQMA was declared in 2006 (Figure 1.1).

The 2006 Updating and Screening Assessment, prepared at the start of the third round of Review and Assessment, confirmed the findings of the second round. High nitrogen dioxide concentrations were measured in Wood Street, Stratford-upon-Avon and additional monitoring was established to investigate this.

The 2008 Progress Report considered monitoring data available since the 2006 Updating and Screening Assessment. The report concluded that there were exceedances of the annual mean nitrogen dioxide objective at relevant locations outside of the Studley AQMA. These locations were identified as Henley-in-Arden and Wood Street, Grove Road, Greenhill Street and Tiddington Road in Stratford-upon-Avon. The Council therefore proceeded to undertake a Detailed Assessment at these locations.

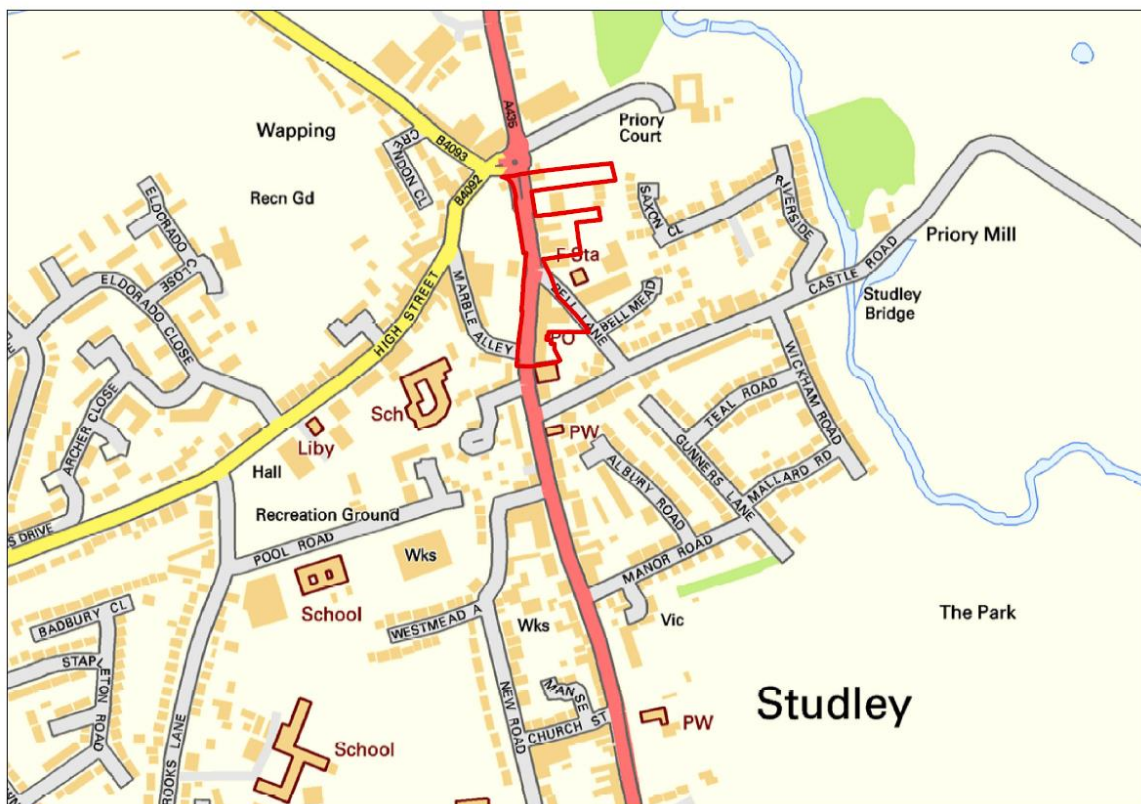
The 2008 Detailed Assessment concluded that AQMAs were required in both Henley-in-Arden and Stratford-upon-Avon. An AQMA was subsequently declared for Stratford-upon-Avon, and following the Further



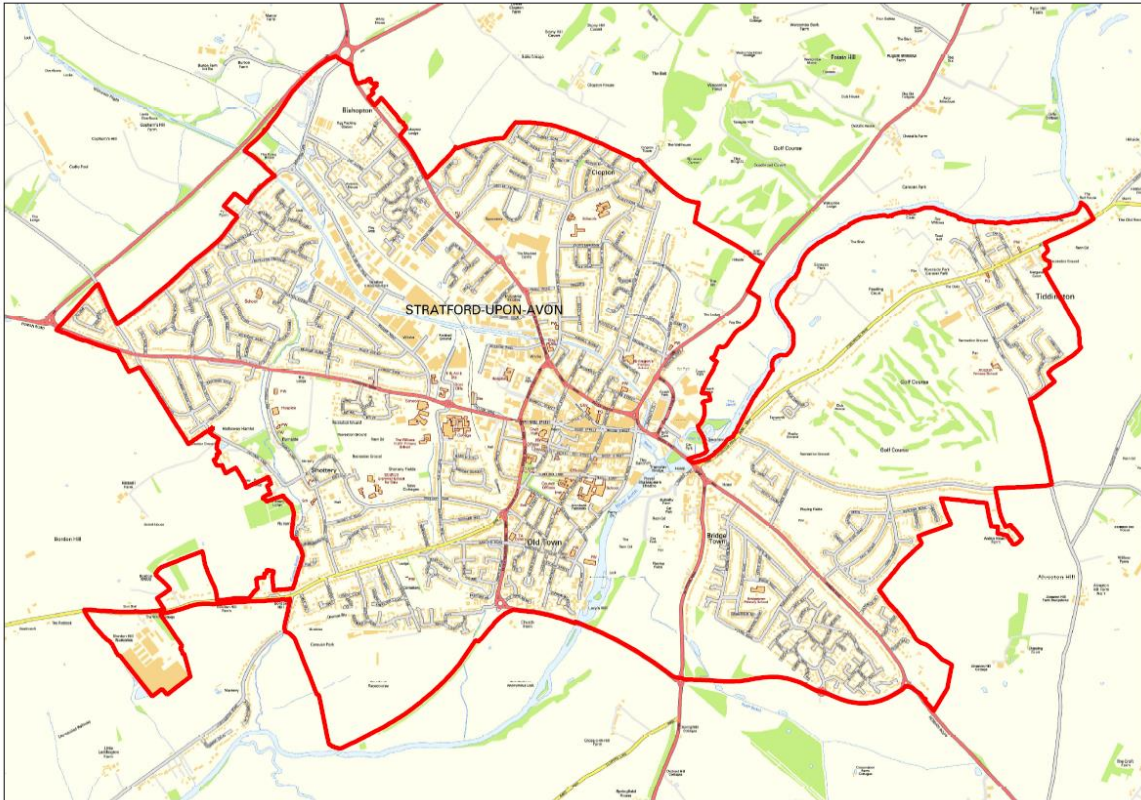
Assessment carried out in 2010, the area was expanded (Figure 1.2). An AQMA was not declared in Henley-in-Arden, and subsequent monitoring confirms that an AQMA is no longer required.

The 2010 Progress Report concluded that there were no significant changes to air quality within the District, and that a Detailed Assessment was not necessary. The 2012 Updating and Screening Assessment considered new monitoring data for 2010 and 2011, and changes to sources since the 2009 Updating and Screening Assessment. Significant reductions in measured concentrations over the last five years were demonstrated, no significant changes to sources of emissions were identified, and it was not considered necessary to proceed to a Detailed Assessment.

The 2013/4 Progress Reports did not identify any significant changes to emissions sources within the Stratford-on-Avon District Council area that would have led to a deterioration in air quality that might have required a more Detailed Assessment



**Figure 1.1 Studley AQMA Boundary** Contains Ordnance Survey data © Crown copyright and database right [2013]



**Figure 1.2 Stratford-upon-Avon AQMA Boundary** Contains Ordnance Survey data © Crown copyright and database right [2013]

## **2 New Monitoring Data**

### **2.1 Summary of Monitoring Undertaken**

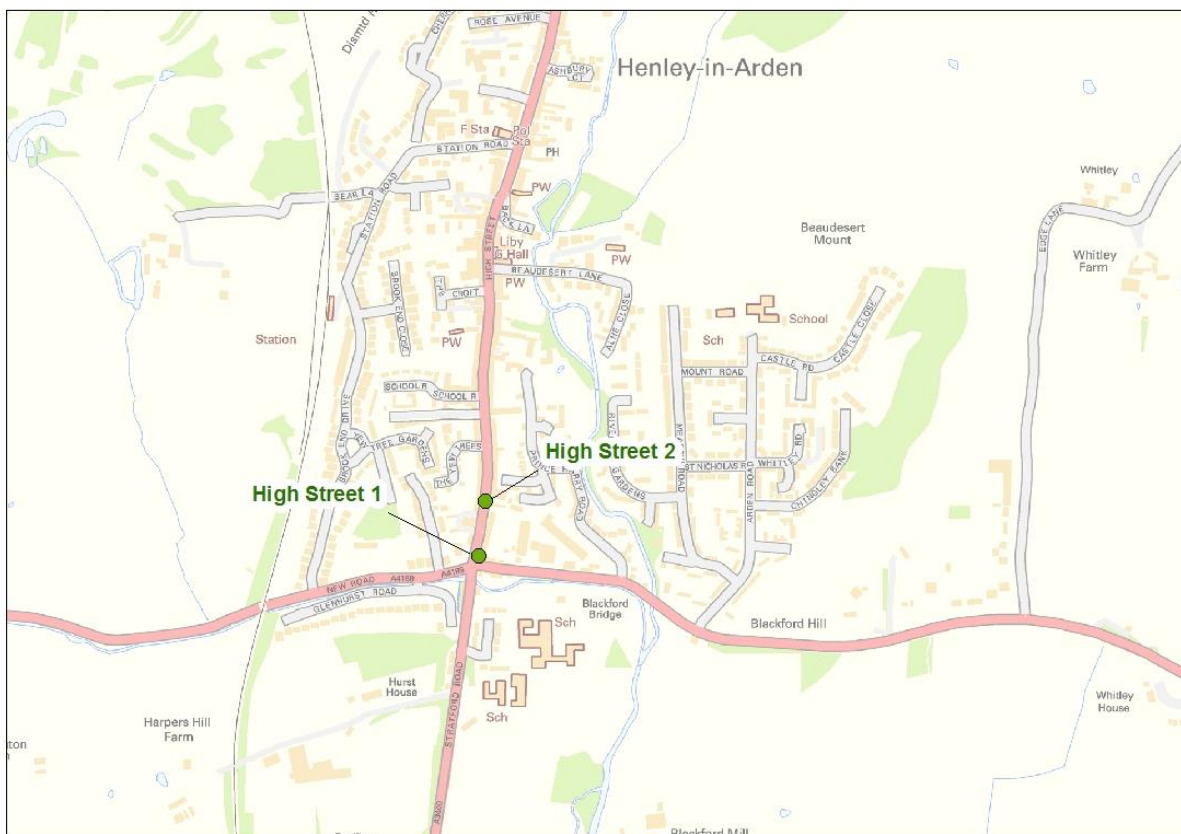
#### **2.1.1 Automatic Monitoring Sites**

Stratford-on-Avon District Council does not carry out any automatic monitoring

### 2.1.2 Non-Automatic Monitoring Sites

This report presents monitoring data collected since 2007 for twenty-nine monitoring locations. During 2012, Stratford-on-Avon District Council monitored annual mean nitrogen dioxide concentrations using passive diffusion tubes at twenty-one locations across its area and that figure was further reduced to twenty locations in 2013 (Figures 2.1 – 2.4). Table 2.1 provides details of each of the monitoring sites. Maps of decommissioned monitoring sites are provided in Appendix B.

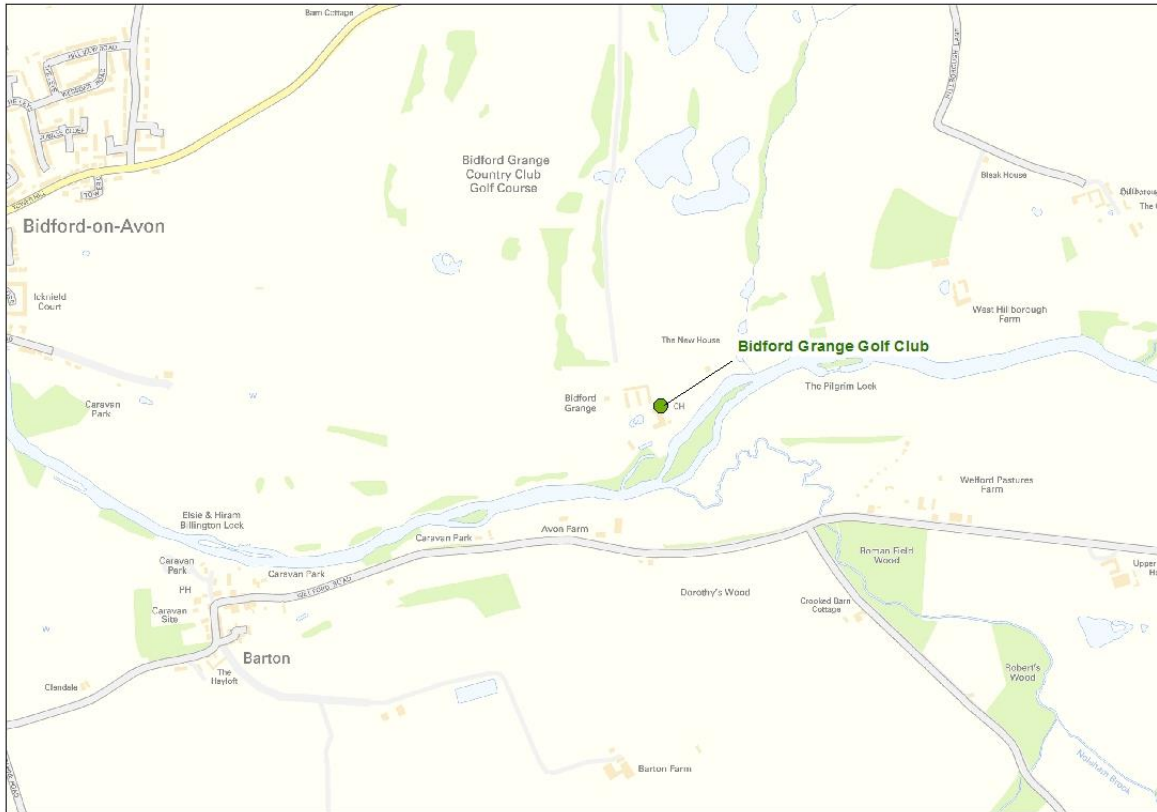
The diffusion tubes are prepared and analysed by Kent Scientific Services ( Jan/feb/Mar) and Gradko ( April onwards) using the 20% TEA in water method. Tubes are changed on a monthly basis. Further details of the diffusion tube QA/QC is presented in Appendix A.



**Figure 2.1 Diffusion Tube Monitoring Sites in Henley-in-Arden**

Contains Ordnance Survey data © Crown copyright and database right [2013]





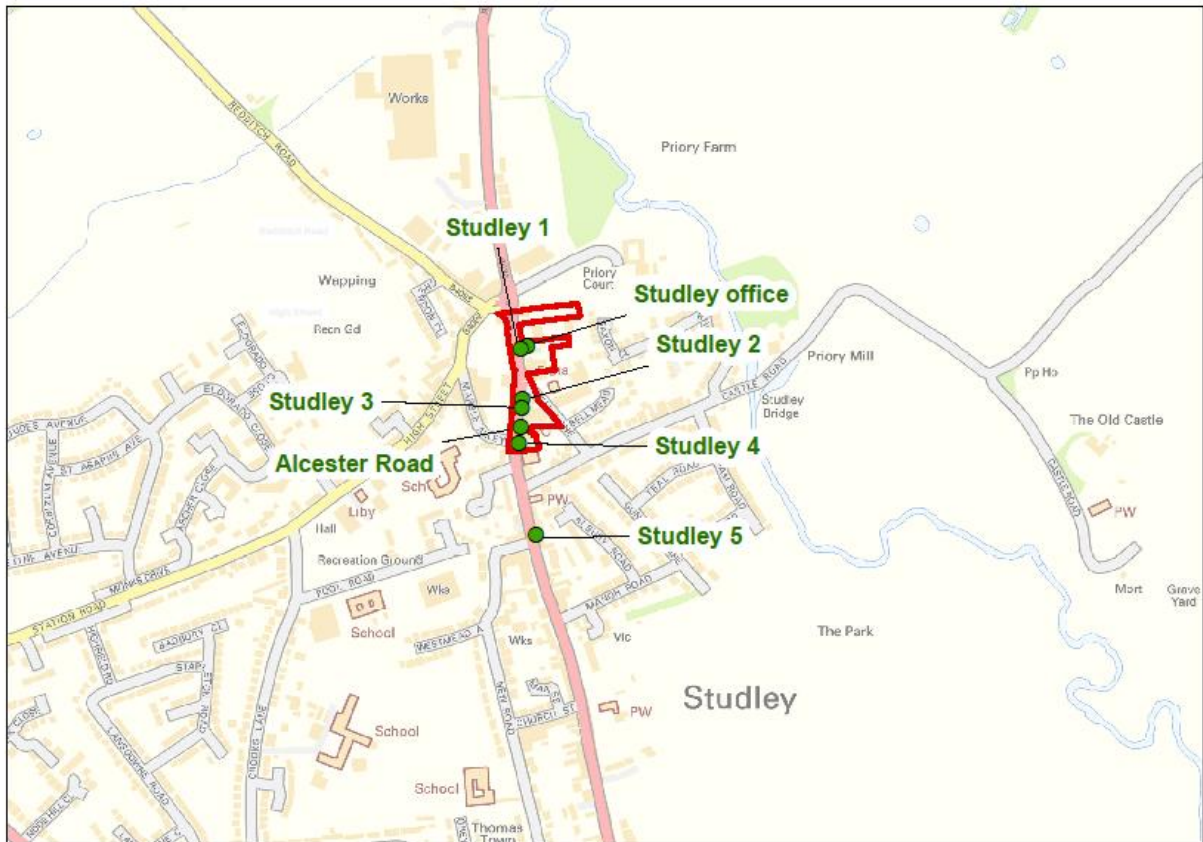
**Figure 2.2 Diffusion Tube Monitoring Sites in Bidford-on-Avon**

Contains Ordnance Survey data © Crown copyright and database right [2013]



**Figure 2.3 Diffusion Tube Monitoring Sites in Stratford-upon-Avon**

Contains Ordnance Survey data © Crown copyright and database right [2013]



**Figure 2.4 Diffusion Tube Monitoring Sites in Studley**

Contains Ordnance Survey data © Crown copyright and database right [2013]

**Table 2.2 Details of Nitrogen Dioxide Diffusion Tube Monitoring Sites**

Site Name	Site Type	X OS Grid Reference	Y OS Grid Reference	In AQMA ?	Relevant Exposure ?	Distance to kerb of nearest road	Does this location represent worst-case exposure?
<b>Henley-in-Arden</b>							
High Street 1, Henley in Arden	Roadside (façade)	415078	265542	N	Y	4.0	Y
High Street 2, Henley in Arden	Kerbside (façade)	415089	265631	N	Y	1.5	N
<b>Bidford-on-Avon</b>							
Bidford Grange Golf Club	Background	411719	251629	N	N	n/a	n/a
<b>Stratford-upon-Avon</b>							
Elizabeth House Garden, SuA	Urban Background	419931	254693	Y	N	59.7	n/a
Shipston Road, SuA	Roadside	420683	254421	Y	Y	6.0	N
Brewery Street, SuA	Urban Background	419948	255342	Y	Y	43.5	n/a
Guild Street, SuA	Roadside	420066	255172	Y	Y	1.6	Y
Tiddington Road, SuA	Kerbside	420710	254818	Y	Y	1.0	Y
Ely Street, SuA	Roadside	419972	254869	Y	Y	1.8	N
Grove Road 1, SuA	Roadside	419759	254917	Y	Y	1.4	Y
Greenhill Street, SuA	Roadside	419768	255016	Y	Y	2.7	Y
Grove Road 2, SuA	Roadside	419758	254931	Y	Y	1.4	Y
Wood Street 2, SuA	Roadside	420127	254990	Y	Y	3.1	Y
<b>Studley</b>							
Alcester Road, Studley	Roadside	407300	263873	Y	Y	2.7	Y
Studley office	Roadside	407309	263991	Y	Y	14.4	N
Studley 1	Roadside	407300	263986	Y	Y	3.5	Y
Studley 2	Roadside	407302	263913	Y	Y	2.5	Y
Studley 3	Roadside	407301	263901	Y	Y	2.3	Y
Studley 4	Roadside	407297	263850	Y	Y	1.5	Y
Studley 5	Roadside	407322	263716	N	Y	3.0	Y
<b>Decommissioned</b>							
High Street, Studley	Roadside	407210	263988	N	Y	2.6	Y
Redditch Road, Studley	Roadside	407193	264088	N	Y	2.0	Y

## Stratford on Avon District Council

Alcester High Street	Roadside	408957	257364	N	Y	1.5	N
Shipston on Stour	Roadside	425896	240530	N	Y	1.5	Y
Wellesbourne	Roadside	427988	255437	N	Y	8.1	N
Bidford on Avon	Rural	409915	251807	N	Y	n/a	n/a
Southam	Roadside	441839	261770	N	Y	9.5	N
Bridgefoot Multistorey Car Park	Other	420435	255054	N	N	58.3	n/a
Wood Street 1, SuA	Roadside	420059	254978	Y	Y	2.3	N



## **2.2 Comparison of Monitoring Results with Air Quality Objectives**

### **2.2.1 Nitrogen Dioxide**

#### **Automatic Monitoring Data**

Stratford-on-Avon District Council does not carry out any automatic monitoring.

#### **Diffusion Tube Monitoring Data**

Measured concentrations at the 20 diffusion tube monitoring sites which were operational in 2014 are presented in Tables 2.2. Concentrations since 2007, at all sites where monitoring data are available, are presented in Table 2.3.

The national bias adjustment factor has been applied to the diffusion tube data. Further details are provided in Appendix A.

Between 2011 and 2014, concentrations continued to reduce at the majority of the sites. Figures 2.5 - 2.6 present data for those sites where at least five years of data are available. Between 2007 and 2014, concentrations have decreased by, on average, 25% (ranging from 16%-32%). Within the Studley AQMA, concentrations have reduced by an average of 18% (ranging from 15%-27%) between 2010 and 2014

**Table 2.5 Results of Nitrogen Dioxide Diffusion Tubes in 2014**

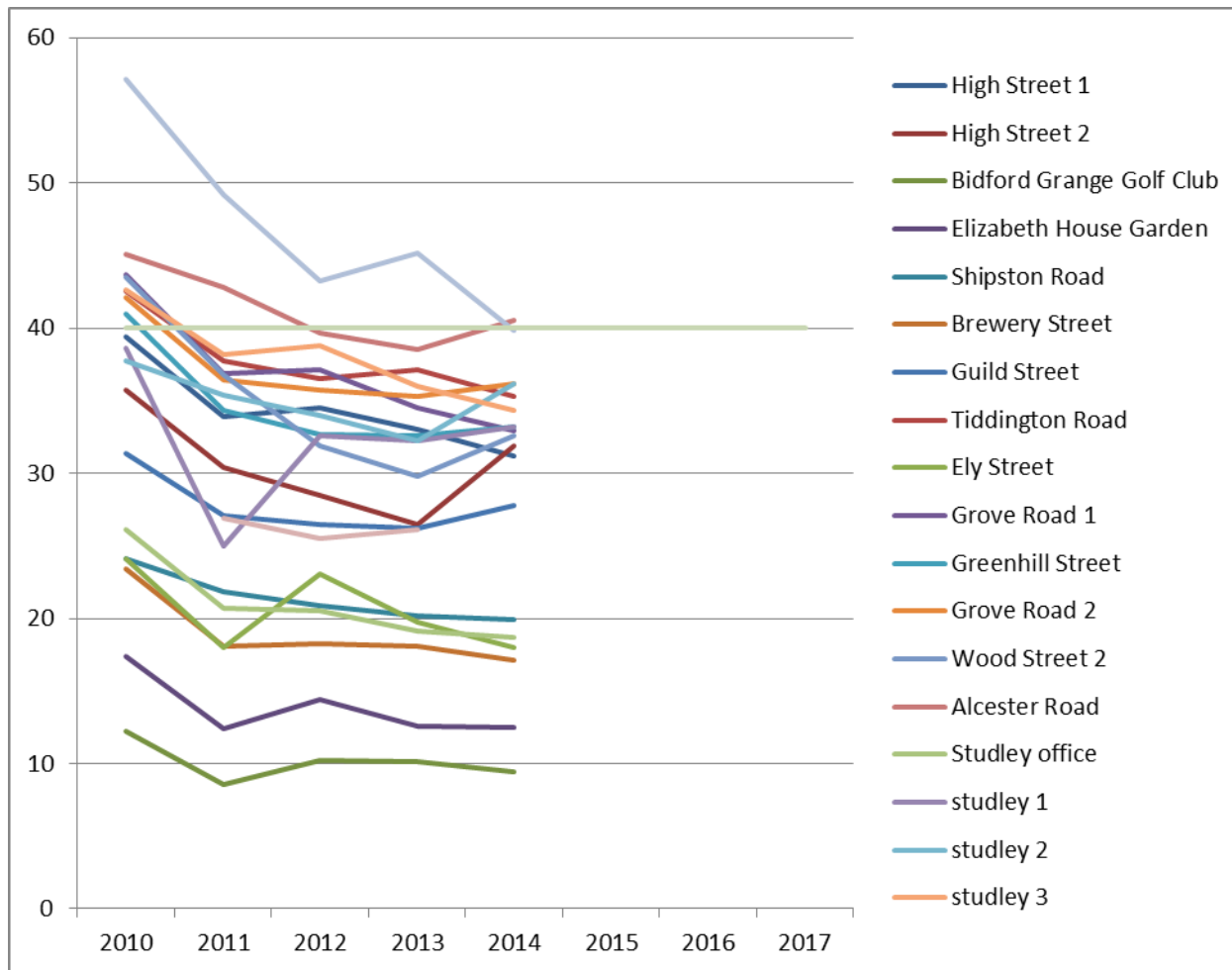
Site	Site Type	In AQMA?	Triplicate or Co-located?	Data Capture (Months)	2014 Annual Mean Concentration ( $\mu\text{g}/\text{m}^3$ )
<b>Henley-in-Arden</b>					
High Street 1	Roadside	N	N	10	31.2
High Street 2	Kerbside	N	N	9	31.9
<b>Bidford-on-Avon</b>					
Bidford Grange Golf Club	Background	N	N	11	9.4
<b>Stratford-upon-Avon</b>					
Elizabeth House Garden	Urban Background	Y	N	9	12.5
Shipston Road	Roadside	Y	N	11	19.9
Brewery Street	Urban Background	Y	N	11	17.1
Guild Street	Roadside	Y	N	10	27.8
Tiddington Road	Kerbside	Y	N	9	35.3
Ely Street	Roadside	Y	N	11	18.0
Grove Road 1	Roadside	Y	N	9	32.9
Greenhill Street	Roadside	Y	N	7	33.2
Grove Road 2	Roadside	Y	N	9	32.1
Wood Street	Roadside	Y	N	11	32.6
<b>Studley</b>					
Alcester Road	Roadside	Y	N	3	40.5
Studley office	Roadside	Y	N	10	18.7
Studley 1	Roadside	Y	N	11	33.2
Studley 2	Roadside	Y	N	10	36.2
Studley 3	Roadside	Y	N	9	34.3
Studley 4	Roadside	Y	N	9	<b>39.8</b>
Studley 5	Roadside	N	N	11	25.3
<b>Objective</b>					<b>40</b>

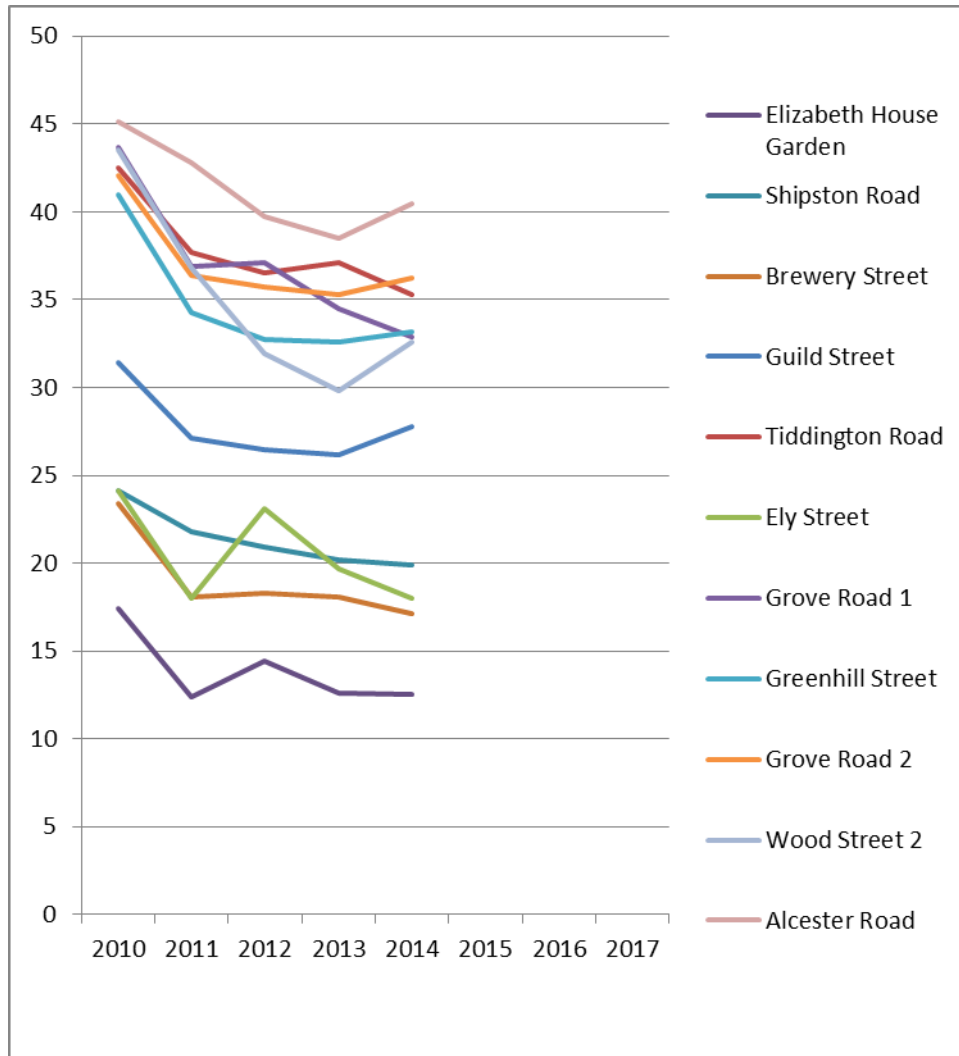
**Table 2.6 Results of Nitrogen Dioxide Diffusion Tubes (2010 to 2014)**

Site	Site Type	In AQMA?	Annual Mean Concentration ( $\mu\text{g}/\text{m}^3$ )					2014(*)
			2010 [0.78]	2011 [0.77]	2012 [0.82]	2013 [0.77]		
<b>Henley-in-Arden</b>								
High Street 1	Roadside	N		39.4	33.9	34.5	33.0	31.2
High Street 2	Kerbside	N		35.7	30.4	28.5	26.5	31.9
<b>Bidford-on-Avon</b>								
Bidford Grange Golf Club	Background	N		12.2	8.6	10.2	10.1	9.4
<b>Stratford-upon-Avon</b>								
Elizabeth House Garden	Urban Background	Y		17.4	12.4	14.4	12.6	12.5
Shipston Road	Roadside	Y		24.1	21.8	20.9	20.2	19.9
Brewery Street	Urban Background	Y		23.4	18.1	18.3	18.1	17.1
Guild Street	Roadside	Y		31.4	27.1	26.5	26.2	27.8
Tiddington Road	Kerbside	Y		<b>42.5</b>	37.7	36.5	37.1	35.3
Ely Street	Roadside	Y		24.1	18.0	23.1	19.7	18.0
Grove Road 1	Roadside	Y		<b>43.7</b>	36.9	37.1	34.5	32.9
Greenhill Street	Roadside	Y		<b>41.0</b>	34.3	32.7	32.6	33.2
Grove Road 2	Roadside	Y		<b>42.1</b>	36.4	35.7	35.3	36.2
Wood Street 2	Roadside	Y		<b>43.5</b>	36.8	31.9	29.8	32.6
<b>Studley</b>								
Alcester Road	Roadside	Y		<b>45.1</b>	<b>42.8</b>	39.7	38.5	40.5
Studley office	Roadside	Y		26.1	20.7	20.5	19.1	18.7
Studley 1	Roadside	Y		38.6	25.0	32.6	32.2	33.2
Studley 2	Roadside	Y		37.7	35.4	34.0	32.2	36.2
Studley 3	Roadside	Y		<b>42.6</b>	38.2	38.8	36.0	34.3
Studley 4	Roadside	Y		<b>57.1</b>	<b>49.2</b>	<b>43.2</b>	<b>45.2</b>	<b>39.8</b>
Studley 5	Roadside	N		33.9	26.9	25.5	26.1	25.3
<b>Objective</b>				<b>40</b>	<b>40</b>	<b>40</b>	<b>40</b>	<b>40</b>

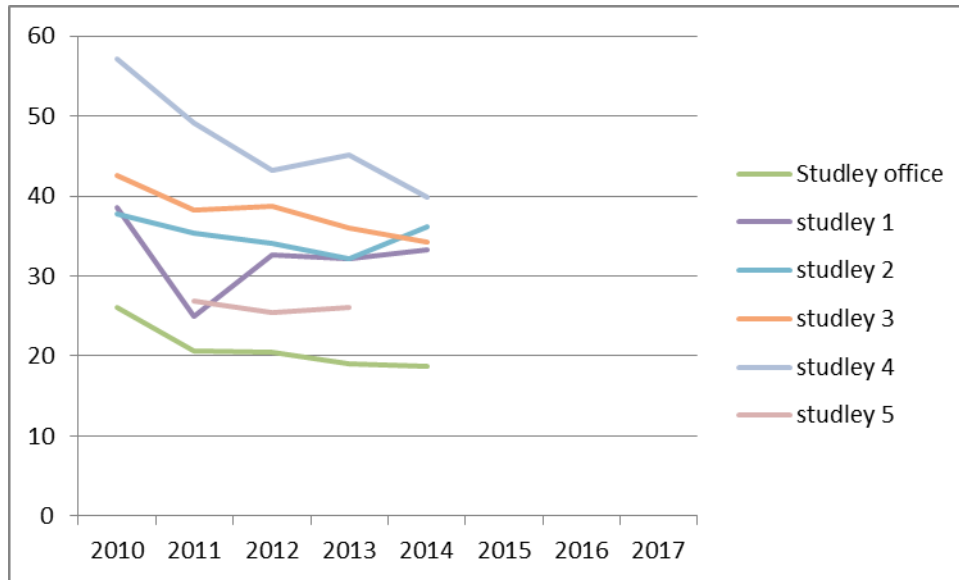
(\* ) average used 0.77 for first 3 months, 0.91 for remainder)

**Figure 2.4 Trends in Annual Mean Nitrogen Dioxide Concentrations measured at Diffusion Tube Monitoring Sites**





## Stratford on Avon District Council



**2.2.1 PM<sub>10</sub>**

PM<sub>10</sub> is not monitored within the Stratford-on-Avon District Council area.

**2.2.2 Sulphur Dioxide**

Sulphur Dioxide is not monitored within the Stratford-on-Avon District Council area.

**2.2.3 Benzene**

Benzene is not monitored within the Stratford-on-Avon District Council area.

**2.2.4 Other pollutants monitored**

No other pollutants are monitored within the Stratford-on-Avon District Council area

### **2.2.5 Summary of Compliance with AQS Objectives**

Stratford-on-Avon District Council has examined the results from monitoring in the District. Concentrations are below the objectives at all but one location, which lies within the existing Studley AQMA. There is therefore no need to proceed to a Detailed Assessment.



## **3 Road Traffic Sources**

### **3.1 Narrow Congested Streets with Residential Properties Close to the Kerb**

Stratford on Avon DC confirms that there are no new/newly identified congested streets with a flow above 5,000 vehicles per day and residential properties close to the kerb, that have not been adequately considered in previous rounds of Review and Assessment.

### **3.2 Busy Streets Where People May Spend 1-hour or More Close to Traffic**

Stratford on Avon DC confirms that there are no new/newly identified busy streets where people may spend 1 hour or more close to traffic.

### **3.3 Roads with a High Flow of Buses and/or HGVs.**

Stratford on Avon DC confirms that there are no new/newly identified roads with high flows of buses/HGVs.

### **3.4 Junctions**

Stratford on Avon DC confirms that there are no new/newly identified busy junctions/busy roads.

### **3.5 New Roads Constructed or Proposed Since the Last Round of Review and Assessment**

Stratford on Avon DC has assessed new/proposed roads meeting the criteria in Section A.5 of Box 5.3 in TG(09), and concluded that it will not be necessary to proceed to a Detailed Assessment.

### **3.6 Roads with Significantly Changed Traffic Flows**

Stratford on Avon DC confirms that there are no new/newly identified roads with significantly changed traffic flows.

### **3.7 Bus and Coach Stations**

Stratford on Avon DC confirms that there are no relevant bus stations in the Local Authority area.

## 4 Other Transport Sources

### 4.1 Airports

Stratford on Avon DC confirms that there are no airports in the Local Authority area.

### 4.2 Railways (Diesel and Steam Trains)

#### 4.2.1 Stationary Trains

Stratford on Avon DC confirms that there are no locations where diesel or steam trains are regularly stationary for periods of 15 minutes or more, with potential for relevant exposure within 15m.

#### 4.2.2 Moving Trains

**Stratford on Avon DC** confirms that there are no locations with a large number of movements of diesel locomotives, and potential long-term relevant exposure within 30m.

### 4.3 Ports (Shipping)

Stratford on Avon DC confirms that there are no ports or shipping that meet the specified criteria within the Local Authority area.

## **5 Industrial Sources**

### **5.1 Industrial Installations**

#### **5.1.1 New or Proposed Installations for which an Air Quality Assessment has been Carried Out**

Stratford on Avon DC confirms that there are no new or proposed industrial installations for which planning approval has been granted within its area or nearby in a neighbouring authority.

#### **5.1.2 Existing Installations where Emissions have Increased Substantially or New Relevant Exposure has been Introduced**

Stratford on Avon DC confirms that there are no industrial installations with substantially increased emissions or new relevant exposure in their vicinity within its area or nearby in a neighbouring authority.

#### **5.1.3 New or Significantly Changed Installations with No Previous Air Quality Assessment**

Stratford on Avon DC confirms that there are no new or proposed industrial installations for which planning approval has been granted within its area or nearby in a neighbouring authority.

## **5.2 Major Fuel (Petrol) Storage Depots**

There are no major fuel (petrol) storage depots within the Local Authority area.

## **5.3 Petrol Stations**

Stratford on Avon DC confirms that there are no petrol stations meeting the specified criteria.

## **5.4 Poultry Farms**

Stratford on Avon DC confirms that there are no poultry farms meeting the specified criteria.

## **6 Commercial and Domestic Sources**

### **6.1 Biomass Combustion – Individual Installations**

Stratford on Avon DC confirms that there are no biomass combustion plant in the Local Authority area.

### **6.2 Biomass Combustion – Combined Impacts**

Stratford on Avon DC confirms that there are no biomass combustion plant in the Local Authority area.

### **6.3 Domestic Solid-Fuel Burning**

Stratford on Avon DC confirms that there are no areas of significant domestic fuel use in the Local Authority area.

## 7 Fugitive or Uncontrolled Sources

Stratford on Avon DC confirms that there are no potential sources of fugitive particulate matter emissions in the Local Authority area.

## **8 Conclusions and Proposed Actions**

### **8.1 Conclusions from New Monitoring Data**

Measured concentrations have decreased significantly over the last six years. In 2014, there was only one measured exceedance, at a monitoring site within the existing Studley AQMA. There is no need to proceed to a Detailed Assessment based on the results of monitoring within the Stratford-on-Avon DC area and consideration will be given instead to revoking the AQMA.

### **8.2 Proposed Actions**

The draft Studley Action Plan is being revisited and it will be updated where necessary.



## 9 References

Defra (2009) Review & Assessment: Technical Guidance LAQM.TG(09), available at: <http://archive.defra.gov.uk/environment/quality/air/airquality/local/guidance/documents/tech-guidance-laqm-tg-09.pdf>

Defra (2014) Data Archive, available at: <http://uk-air.defra.gov.uk/data>

# Appendices

Air Quality Assessment: Cumulative Impact of Developments in Stratford  
on Avon May 2015